

**臺北/松山機場**  
TAIPEI/SONGSHAN AD

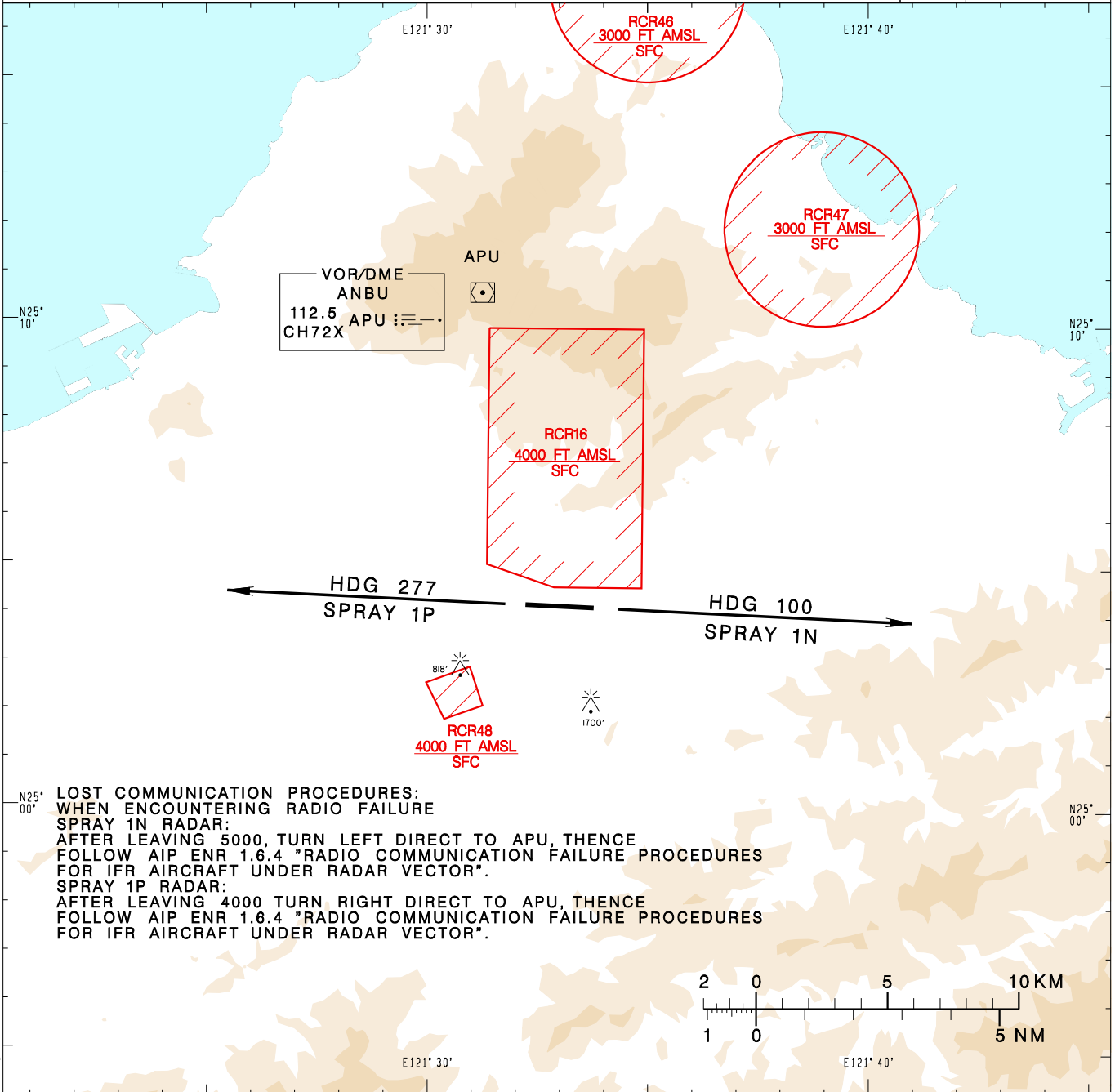
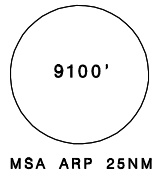
RCSS SID  
SPRAY 1N RADAR(RWY10)  
SPRAY 1P RADAR(RWY28)

TAIPEI APP 119.7 119.6 125.1	SONGSHAN TWR 118.1	ATIS 127.4 341
---------------------------------	-----------------------	-------------------

Apt Elev: 18'      Trans Level: FL130      Trans Alt: 11,000'

BEARINGS ARE MAGNETIC; DISTANCES ARE NAUTICAL MILES; ELEVATIONS, HEIGHTS IN FEET

VAR 5° W-2022



**LOST COMMUNICATION PROCEDURES:**  
WHEN ENCOUNTERING RADIO FAILURE  
SPRAY 1N RADAR:  
AFTER LEAVING 5000, TURN LEFT DIRECT TO APU, THENCE FOLLOW AIP ENR 1.6.4 "RADIO COMMUNICATION FAILURE PROCEDURES FOR IFR AIRCRAFT UNDER RADAR VECTOR".  
SPRAY 1P RADAR:  
AFTER LEAVING 4000 TURN RIGHT DIRECT TO APU, THENCE FOLLOW AIP ENR 1.6.4 "RADIO COMMUNICATION FAILURE PROCEDURES FOR IFR AIRCRAFT UNDER RADAR VECTOR".

CHANGES: RECHART; MAG VAR AND TRACK.

**SPRAY ONE NOVEMBER RADAR DEPARTURE**  
Climb on HDG 100 to ATC assigned altitude for vectors to assigned route/fix.

**SPRAY ONE PAPA RADAR DEPARTURE**  
Climb on HDG 277 to ATC assigned altitude for vectors to assigned route/fix.

**NOTE**

- SPRAY 1N RADAR:  
Minimum climb gradient required: 7.0%(426ft/NM) until 4000ft.
- SPRAY 1P RADAR:  
Minimum climb gradient required: 7.4%(450ft/NM) until 4000ft.
- Caution high terrain around airport.
- A 1700ft-high BLDG at 2.1NM south of THR 28.
- A 818ft-high BLDG at 2 NM SW of THR 10.